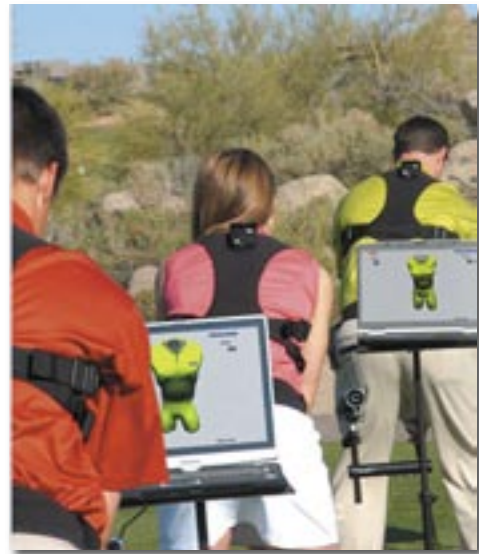




## K-VEST SWING TECHNOLOGY

Innovative 3D wireless instructional technology is now available to PGA/LPGA professionals, college and high school coaches, or any golf enthusiast. With the application of advanced wireless technology, the K-VEST is revolutionizing how physical motion is measured, and optimum performance is achieved. The K-VEST is the by-product of over 16 years of research conducted by PGA Tour Instructor, Michael Bentley, in conjunction with many leaders in the field of human motion. The technology now makes it possible for instructors to capture and measure physical motion in real time, identify swing faults, and then use the same technology to effortlessly and precisely communicate the correct movements to students.



The K-VEST, which can be used indoors or outdoors, uses 3 wireless sensors, strategically placed on the golfer's hip, shoulder and hand and an optional video camera. In turn, the sensors communicate wirelessly with Bentley's proprietary KINESYNC software on a laptop to display live 3-D animation, and video.

The instructor simply records a swing, and within seconds, the software generates a complete 3D swing analysis allowing the instructor to quickly identify swing faults. The exercise mode can then be used to provide real-time audio/visual feedback to optimize performance improvement.

### Other Features

- Portable golf instructional system using wireless sensors to capture motion much faster than with a standard video system
- Software generates a complete 3-D swing analysis of any point of the swing
- Exercise mode allows precise training using 3D animation to receive visual, auditory and kinesthetic feedback