



MEDIA GUIDE

GRAND OPENING OF THE
STONO FERRY
GOLF LEARNING CENTER



HOME OF THE NCAA DIVISION I
COLLEGE OF CHARLESTON MEN'S & WOMEN'S GOLF PROGRAM

WEDNESDAY, SEPTEMBER 26, 2007



LEARNING CENTER FACTS

Main Building

2358 sq. ft

Consists of:

- Main lounge/eating area with kitchen
- Men's & Women's restrooms and lockers rooms
- Conference/Team meeting room
- Offices for Men's and Women's coaches

Indoor Hitting Bays

1877 total sq. ft.

- (860 sq. ft. upstairs in an efficiency apartment)

1017 sq. ft downstairs

Consists of:

- 2 Hitting Bays
- Club Repair Area - Regripping, Basic Shafting and Loft & Lie Machine

Hitting Bays are equipped with:

The **K-VEST** product suite is a portable golf instructional system that uses wireless sensors to capture motion much faster than a standard video system. It helps instructors capture and analyze the golf swing motion in real-time 3-D, while providing immediate biofeedback to students. David Leadbetter endorses the product claiming the K-VEST "is the future of golf instruction." Source: www.pgamagazine.com

The Bays will also be equipped with the **V-1 Pro** video system which allows teaching professionals the ability to capture a golf swing and provide analysis through interactive playback of the recorded motion. V1 Golf offers a complete system of game improvement that directly compliments face to face instruction, integrates distance learning and provides effective self help. V1 Golf is used by top instructors everywhere including Butch Harmon and David Leadbetter.

Finally, the bays will include the **Vector Pro** which delivers launch monitor data with video swing analysis for both fittings and lessons.





NEW LEARNING CENTER & PRACTICE RANGE



Practice Range, Bunkers & Greens
Designed & built by:

Forrest Fezler, Fezler Golf Design
www.FezlerGolfDesign.com



V1 PRO VIDEO SYSTEM

V1 PRO is a video system that allows teaching professionals the ability to capture a golf swing and provide analysis through interactive playback of the recorded motion. V1 Golf offers a complete system of game improvement that directly compliments face to face instruction, integrates distance learning and provides effective self help.

- High Resolution capture and playback
- View split screen comparison of swing
- Synchronize two swings in slow motion
- Ability to 'slide' a frame in all directions to best line up swings for comparison
- 3D animated ball flights
- Dual FireWire® camera support – preview and record two full views simultaneously without using additional video mixer hardware
- Video overlay. Take two videos in Compare Mode and blend them together in one image
- View a fluid motion in a single image with multiple exposure time-lapse
- Seamless integration with Internet Golf Academy & V1 Golf providing personalized distance learning
- New 'Record to the Internet' button provides on click analysis uploading to the Internet
- Audio hit detector automatically initiates the start and end of each swing allowing the lesson to continue without interruptions
- Student Management System provides a history of students' swing and adjustments made.
- Run V1 Pro in a 'window' on your desktop



V1 is Currently Used by:

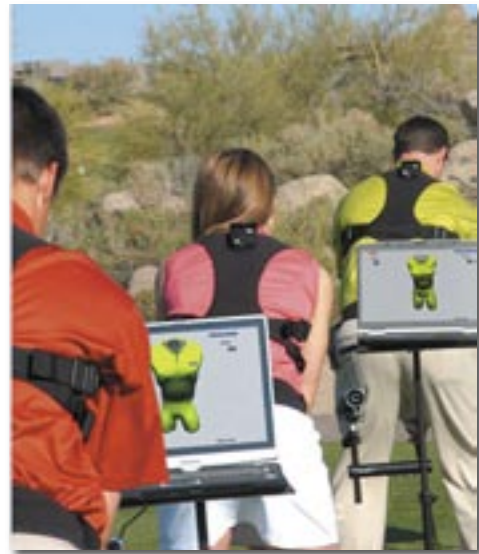
Butch Harmon School of Golf
David Leadbetter
Faldo Golf Institute
Harvey Penick Golf Academy
Muirfield Village Golf Club
PGA Teaching & Learning Center

Callaway Golf
ESPN Golf
First Tee
Kiawah Golf Resort
Nike Golf Learning Centers
Rick Smith



K-VEST SWING TECHNOLOGY

Innovative 3D wireless instructional technology is now available to PGA/LPGA professionals, college and high school coaches, or any golf enthusiast. With the application of advanced wireless technology, the K-VEST is revolutionizing how physical motion is measured, and optimum performance is achieved. The K-VEST is the by-product of over 16 years of research conducted by PGA Tour Instructor, Michael Bentley, in conjunction with many leaders in the field of human motion. The technology now makes it possible for instructors to capture and measure physical motion in real time, identify swing faults, and then use the same technology to effortlessly and precisely communicate the correct movements to students.



The K-VEST, which can be used indoors or outdoors, uses 3 wireless sensors, strategically placed on the golfer's hip, shoulder and hand and an optional video camera. In turn, the sensors communicate wirelessly with Bentley's proprietary KINESYNC software on a laptop to display live 3-D animation, and video.

The instructor simply records a swing, and within seconds, the software generates a complete 3D swing analysis allowing the instructor to quickly identify swing faults. The exercise mode can then be used to provide real-time audio/visual feedback to optimize performance improvement.

Other Features

- Portable golf instructional system using wireless sensors to capture motion much faster than with a standard video system
- Software generates a complete 3-D swing analysis of any point of the swing
- Exercise mode allows precise training using 3D animation to receive visual, auditory and kinesthetic feedback



VECTOR PRO LAUNCH MONITOR

Vector Pro delivers launch monitor data with video swing analysis for both club fittings and golf lessons.

Features

- Compare equipment performance with actual ball performance data
- Compare swing, grip and stance changes with actual ball performance data
- Display performance trends
- Issue lesson and equipment reports
- Review swing mechanics
- Store and compare actual ball performance data with selected swings and equipment

Measured Parameters

- Ball Speed: within 0.5 MPH
- Launch Angle: within 0.2 degrees
- Back Spin: within 150 RPM
- Side Spin: within 150 RPM
- Side Angle: within 2 degrees

Ball Flight Calculations

- Down Range
- Off Line
- Flight Time
- Max Height
- Total Distance





2007/2008 MEN'S ROSTER

Head Coach - Mark McEntire

Ryan Blue	5-9	So.	Athens, GA
Ben Dangerfield	5-9	So.	Aiken, SC
Scott Glaze	6-2	So.	Sumter, SC
Soonam Kim	5-8	Sr.	Goose Creek, SC
Scott Larkin	6-2	Jr.	Banchory, Scotland
Elliott Lopez	6-1	Fr.	Chapin, SC
Dennis McCollum	6-2	Sr.	Summerville, SC
Harrison Moore	6-2	So.	Orangeburg, SC
Austin Parks	5-9	Fr.	Mt. Pleasant, SC
Tim Tang	5-9	Sr.	North Charleston, SC
Ross Tooley	6-2	Fr.	Mt. Pleasant, SC



2007/2008 MEN'S TOURNAMENT SCHEDULE

Mon, Sept 17 - Tue, Sept 18, 2007	Texas Cup Intercollegiate at Texas Golf Club -- Austin, Texas	7 a.m.
Sun, Sept 30 - Tue, Oct 2, 2007	Fighting Irish Gridiron Classic at Warren -- South Bend, Indiana	7 a.m.
Mon, Oct 15 - Tue, Oct 16, 2007	Louisiana Tech Intercollegiate at Squire Creek -- Rustin, La.	7 a.m.
Mon, Oct 29 - Tue, Oct 30, 2007	UNCG Bridgestone Collegiate at Forest Oaks -- Greensboro, NC	7 a.m.
Mon, Nov 5 - Wed, Nov 7, 2007	Hawaii Tournament at Turtle Bay -- Kahuku, Hawaii	7 a.m.
Mon, Feb 18 - Tue, Feb 19, 2008	Rice Intercollegiate at Westwood -- Houston, Texas	7 a.m.
Sun, Feb 24 - Tue, Feb 26, 2008	The Cuthbert Cup at Osprey and Cougar Point -- Kiawah Island, SC	7 a.m.
Sun, Mar 2 - Tue, Mar 4, 2008	Seminole Intercollegiate at Golden Eagle -- Tallahassee, FL	7 a.m.
Mon, Mar 10 - Tue, Mar 11, 2008	Callaway Golf Invitational at The Farms -- San Diego, CA	7 a.m.
Sun, Mar 23 - Tue, Mar 25, 2008	Hootie at Bulls Bay, Bulls Bay -- Awendaw, SC	7 a.m.
Mon, April 7 - Tue, April 8, 2008	Wyoming Cowboy Classic at Talking Stick -- Scottsdale, AZ	7 a.m.
Sun, April 20 - Tue, April 22, 2008	Southern Conference Championship at CC of South Carolina -- Florence, SC	7 a.m.



2007/2008 WOMEN'S ROSTER

Head Coach: Jamie Futrell

Courtney Brink	So.	Ponte Vedra Beach, FL
Steffi Kirchmayr	Jr.	Pocking, Germany
Joanna Klatten	Sr.	Paris, France
Fiona Puyo	Sr.	Pau, France
Emily Rapp	So.	Simpsonville, SC
Kati Scholten	Fr.	Brookings, SD
Kelli White	Sr.	Moore, SC



2007/2008 WOMEN'S TOURNAMENT SCHEDULE

Sun, Sept 9 - Tue, Sept 11, 2007	Cougar Classic at Yeamans Hall Club -- Charleston, SC
Sat, Sept 24 - Sun, Sept 25, 2007	Myrtle Beach Invitational -- Myrtle Beach, SC (Coastal Carolina)
Fri, Oct 5 - Sun, Oct 7, 2007	Lady Tarheel Invitational -- Chapel Hill, NC (North Carolina)
Mon, Oct 29 - Tue, Oct 30, 2007	Palmetto Intercollegiate at Kiawah Island Resort - Oak Point-- Kiawah Island, SC
Sun, Feb 24 - Tues, Feb 26, 2008	Cuthbert Cup at Kiawah Island Resort - Osprey Point-- Kiawah Island, SC
Sun, Mar 9 - Tue, Mar 11, 2008	Pinehurst Challenge - Pinehurst #8 -- Pinehurst, NC
Fri, Mar 14 - Sun, Mar 16, 2008	LSU/Cleveland Classic -- Baton Rouge, LA (Louisiana State)
Fri, Mar 28 - Sun, Mar 30, 2008	Bryan Park Intercollegiate -- Browns Summit, NC (Wake Forest)
Mon, April 7 - Tue, April 8, 2008	Canes & Cardinal Classic -- Miami, FL (Louisville & Miami)
Sun, April 20 - Tue, April 22, 2008	Southern Conference Championship -- The Links at Stono Ferry (Charleston, SC)



QUOTES

"With the support that Stono Ferry and it's members showed our program when we hosted the 2006 Southern Conference Championship, it is only fitting that we will be able to call Stono Ferry home. This practice facility is the best in South Carolina and will allow us to attract recruits from all over the country. In addition, it is equipped with state of the art video equipment and provides excellent practice opportunities. This will be an all weather facility available everyday. I believe this facility is the missing piece to the puzzle and will allow us to return to national prominence. We are pleased to be associated with Stono Ferry and believe this will be beneficial for the College of Charleston Golf Programs."

Mark McEntire
Head Men's Golf Coach
College of Charleston

"The practice facility has far exceeded our expectations. The attention to detail that has been put into all aspects of the facility will make this one of the top practice facilities in the country."

Jamie Futrell
Head Women's Golf Coach
College of Charleston

"We at Stono Ferry are extremely proud to partner with The College of Charleston and its golf teams to build a facility that will help them become one of the elite collegiate programs in the country. The Learning Center and its cutting-edge technology will give the players one of the premier environments in which to perfect their skills. We look forward to this exciting relationship and to seeing The College of Charleston at the top of the collegiate golf polls for many years to come."

J. Patrick Barber
Managing Partner
The Links at Stono Ferry



STONO FERRY FACT SHEET

Year Opened/Architect:	1989 - Ron Garl
Classification:	Upscale, Semi-Private and Open for Public Play
Accolades:	3 1/2 Stars Places to Play – Golf Digest Recently Rated by the Zagat Survey
Statistics:	Green Tees: 6607 Yards Gold Tees: 6082 Yards Black Tees: 5681 Yards Silver Tees: 4928 Yards
Course & Slope Ratings:	Green Tees: 71.9 / 132 Gold Tees: 69.3 / 122 Black Tees: 68.4 / 119 Silver Tees: 64.9 / 111
Grass Types:	Greens: Champion Bermuda
Fairways:	Bermuda 419
Roughs:	Bermuda 419 and Centipede
Facilities:	Completely Renovated Clubhouse Pro Shop Full-Service Grill Practice Range, Putting Green and Chipping Green New! Golf Learning Center
Pro Shop Phone:	Toll Free: (888) 785-1813
Fax:	(843) 763-1905
Address:	4812 Stono Links Drive, Hollywood, SC 29449
General Web Site:	www.StonoFerryGolf.com
Golf eMail:	gwood@stonoferrygolf.com
Golf Staff:	J. Patrick Barber – Managing Partner Greg Wood – General Manager Will Freeman – Golf Professional Meredith McEntire – Director of Sales Michael Eargle – Course Superintendent
Real Estate:	Real Estate Lots and Homes Available Bud Poston - Broker Phone: (843) 763-1817



HISTORY OF STONO FERRY

The Links at Stono Ferry is truly a unique golf experience with eighteen challenging holes played on historic and beautiful grounds. The first owner of record of the plantation property was James Beamer in 1682. A ship's carpenter from Barbados, he was lost at sea on a voyage to visit his homeland in 1687. His son Jacob Beamer continued to plant and farm the plantation after his father's tragic death.

Almost a century later the Battle At Stono Ferry took place on June 20, 1779. This famous American Revolutionary battle was fought along the Stono River. A part of the battle took place where the 12th, 13th, and 14th holes are presently located. One of the military fortifications (redoubt) from the battle is located on the right side of the 12th fairway. The commanding officer for the British and Hessian forces was General Maitland, while General Moultrie led the American Patriots. The British and Hessian forces suffered 129 casualties, while the Americans suffered 153 dead or wounded. One of the American casualties was Hugh Jackson, the older brother of President Andrew Jackson. He died from heat exhaustion he suffered during the battle. Many historians believe Hugh Jackson's death contributed to the disdain President Jackson felt toward the British. His ill feelings toward England played a big part in his presidency's foreign policy.

Stono Ferry also played a part in the Civil War. An original 1863 map shows a Confederate battery known as Battery Wilkes located atop the middle fortification or redoubt used one hundred years earlier in The Battle at Stono Ferry. The location of the redoubt is thought to be close to the 14th tee box. This fortification consisted of 8 privates, one corporal, and two cannons. The original Confederate commander of the Lowcountry's coastal defenses was General Robert E. Lee. He established his command in the tiny hamlet of Coosawatchie. He frequently traveled up and down the coastline to inspect defensive positions including Battery Wilkes.

A railroad line known as the Charleston and Savannah Railroad formerly occupied the land where the cart path for the 13th hole now exists. The line was established in the late 1850's and was the main lifeline between these Southern cities. The rail line was finally abandoned in the late 1960's.

Between famous battles and historical events, Stono Ferry was used as a plantation raising various crops. The Ferry Crossing (14th tee box) that played a strategic role in the American Revolution later served area plantations in need of transporting goods and crops.

With its rich history, The Links at Stono Ferry offers not only challenging golf, but also a truly unique and unforgettable experience.



MEDIA CONTACTS

The Links at Stono Ferry
Greg Wood
General Manager
Ph: 843.763.1817
Email: gwood@stonoferrygolf.com

For additional release information and photo requests please contact:

Impact Golf Marketing
Robbie Wooten
Ph: 336.889.4206
Email: robertw@marketinggolf.com